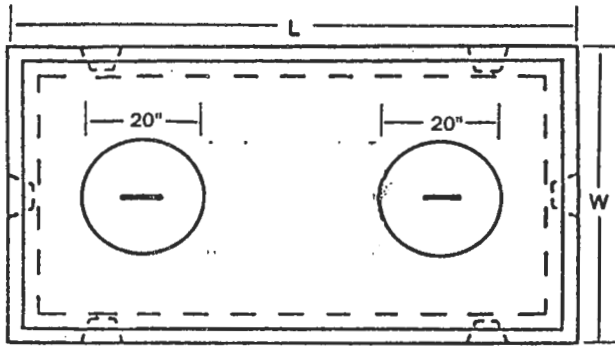
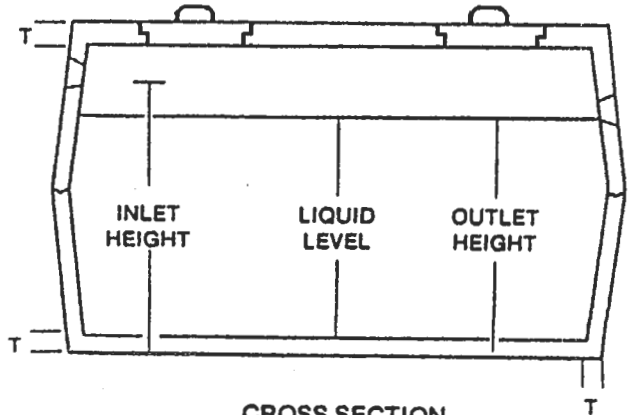




DIMENSIONS AND SPECS. ON SEPTIC TANKS: 650, 750, 900 Gal.



TOP VIEW



CROSS SECTION

DESCRIPTION	ITEM #	H	W	L	THICKNESS			INLET HEIGHT	OUTLET HEIGHT	HOLE SIZE			LIQUID LEVEL	WEIGHT (LB.)
					WALL T	FLOOR T	TOP T			W	L	*D		
650 GAL. SEPTIC TANK	W2•101	4'-6½"	4'-9"	8'-7"	2½"	3"	3½"	3'-8"	3'-6"	6'-0"	9'-0"	3'-8"	3'-3"	8250
750 GAL. SEPTIC TANK	W2•102	4'-11½"	4'-9"	8'-7"	2½"	3"	3½"	4'-1"	3'-11"	6'-0"	9'-0"	4'-1"	3'-8"	6600
900 GAL. SEPTIC TANK	W2•103	6'-0½"	4'-9"	8'-7"	2½"	3"	3½"	5'-2"	5'-0"	6'-0"	9'-0"	5'-2"	4'-9"	7560

- SPECIFICATIONS:**
- Approved by the PEI Dept. of Community & Cultural Affairs
 - 5000 PSI at 28 days
 - Air entraining: 5-7%
 - 10 mm Reinforcing as shown on previous page
 - See detail # W8•001 for Polylok seal detail (page W8•0)
 - See detail # W8•002 for joint detail (page W8•0)

* Depth from bottom of inlet