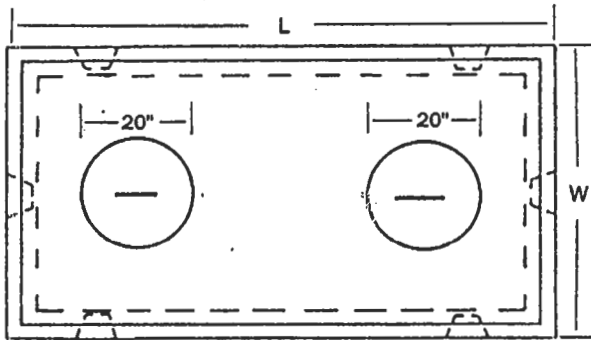


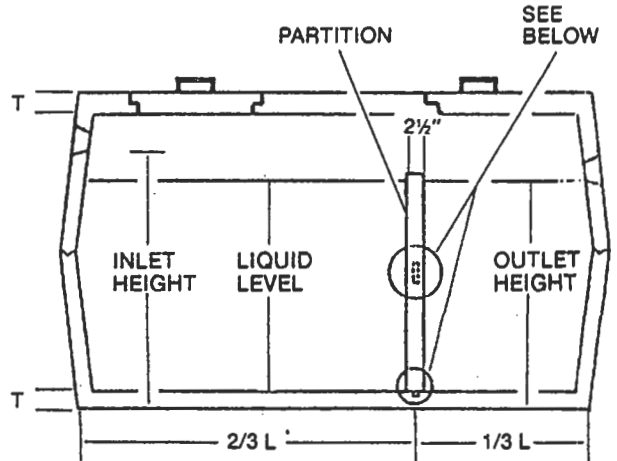


DIMENSIONS AND SPECIFICATIONS ON 1000 GAL. SEPTIC TANK

TOP VIEW



CROSS SECTION



DESCRIPTION	ITEM #	H	W	L	WALL			INLET HEIGHT	OUTLET HEIGHT	HOLE SIZE			LIQUID LEVEL	WEIGHT (LB.)
					T	FLOOR T	TOP T			W	L	*D		
1000 GAL. SEPTIC TANK	W2•201	6'-9"	4'-9"	8'-7"	2½"	3½"	3½"	5'-10½"	5'-8½"	6'-0"	9'-0"	5'-10½"	5'-5"	8350

* Depth from bottom of inlet

- SPECIFICATIONS:**
- Approved by the PEI Dept. of Community & Cultural Affairs
 - 5000 PSI at 28 days
 - Air entraining: 5-7%
 - 10 mm Reinforcing as shown on page # W2•0
 - See detail # W8•001 for Polylok seal detail (page W8•0)
 - See detail # W8•002 for joint detail (page W8•0)

SIDE VIEW

