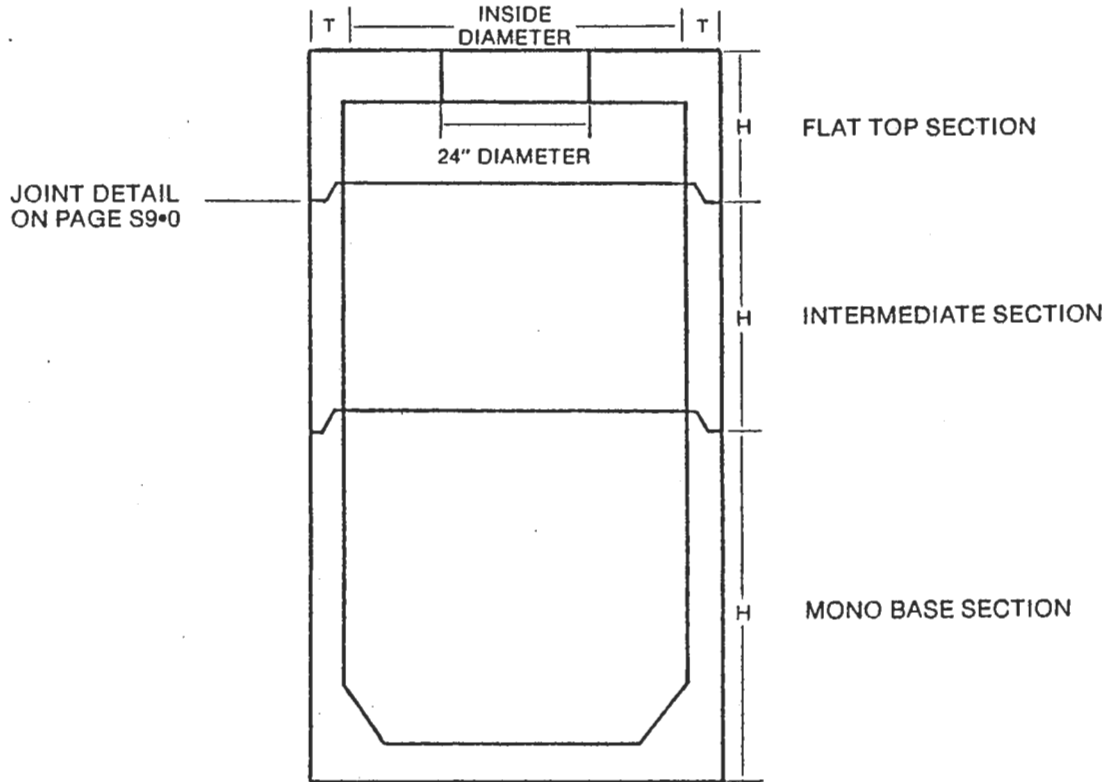




LIFT STATION



SPECIFICATIONS: • Conforms to ASTM C-478

- NOTES:**
- Lift inserts on all sections except Grade Rings
 - 1¼" lift holes in 9" - 30" Grade Rings
 - Size and location of Dura-Seal gasket as per customer specifications (see page S9•0 for details)
 - Covers cast to engineers' specifications
 - See brochures at end of this section for information on manholes and Dura-Seal gaskets