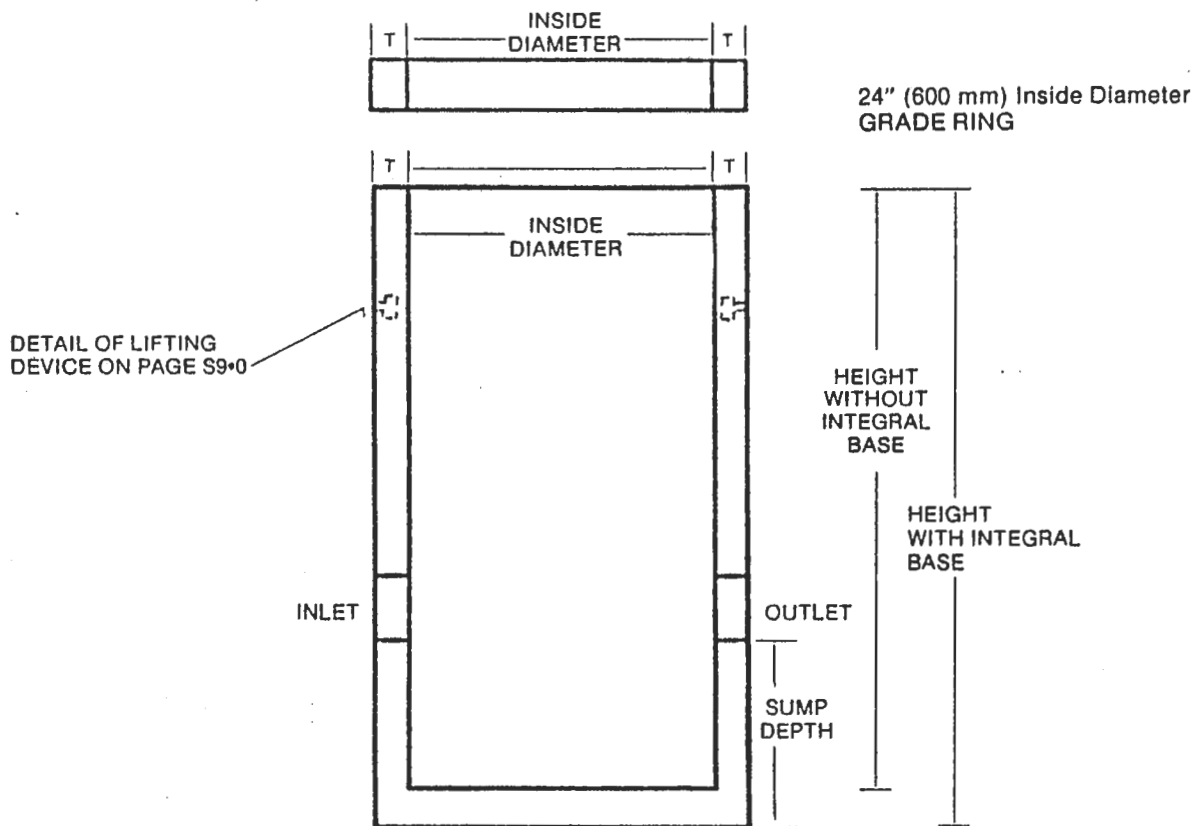




STANDARD CATCH PIT



SPECIFICATIONS:

- 5000 PSI at 28 days
- Air entraining: 5-7%
- Reinforcing: 6 x 6 x 6 Gauge W.W.M. and 10 mm rebar as shown below

NOTES:

- Available with or without integral base
- Size and location of inlet and outlet holes as per customer specifications
- In wall Dura-Seal gasket available upon request (see detail pg. S9•0)
- See brochures at end of this section for information on manholes and Dura-Seal gaskets

