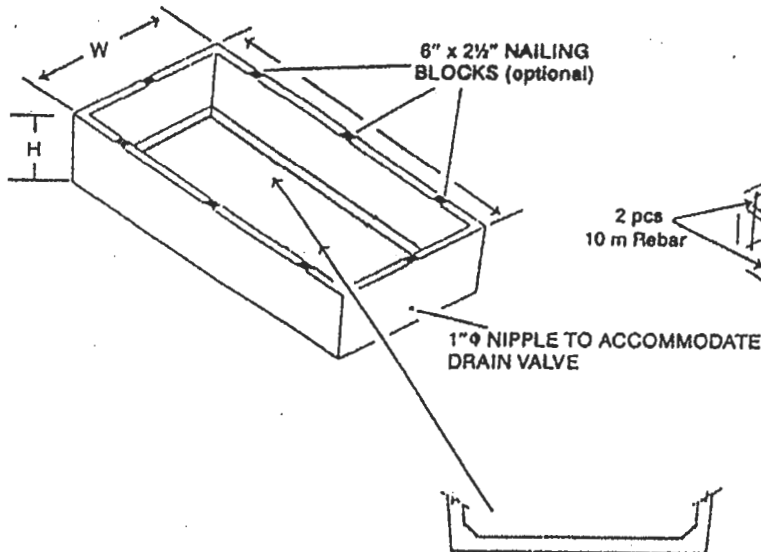


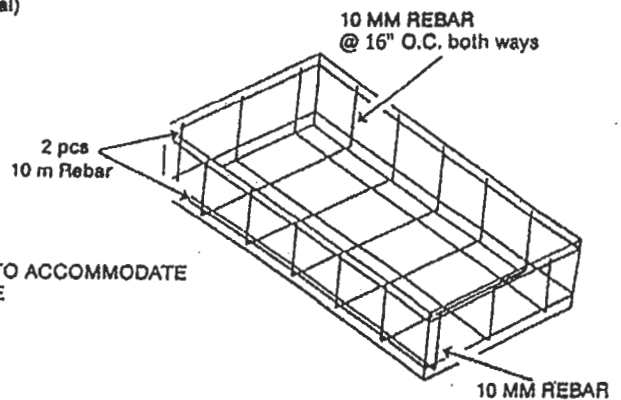


ABOVE GROUND PETROLEUM TANK CONTAINMENT CHAMBERS

ISOMETRIC VIEW



REINFORCING DETAIL



5" x 5" CHAMBER AT FLOOR FOR FROST PROTECTION

DESCRIPTION	ITEM #	OUTSIDE DIMENSIONS			THICKNESS		ACTUAL CAPACITY	WEIGHT
		H	W	L	WALL	FLOOR		
250 GAL. BACKUP CONTAINER	C21-001	2'3"	4'7"	8'7"	2½"	3½"	410	2300
500 GAL. BACKUP CONTAINER	C21-002	2'8½"	7'1"	10'4"	3½"	4½"	860	7350
1100 GAL. BACKUP CONTAINER	C21-003	3'4"	7'9"	15'2"	4"	5"	1650	12500
2000 GAL. BACKUP CONTAINER	C21-004	4'3"	8'2"	14'0"	4"	5½"	2200	14000

- SPECIFICATIONS:**
- Approved by the P.E.I. Dept. of Fisheries, Aquaculture and Environment
 - 5000 psi at 28 days
 - Air entraining: 5-7%
 - Reinforcing as shown

- NOTES:**
- Excellent protection for above ground installations
 - Nailing blocks placed in walls to accommodate fastening of a weather shelter
 - Top sections available, see page C22-0
 - Below ground containers also available, see page C22-0